



SLS
SECURITY



Continental Mark IV
(U.S. UL. TL. 30)

SLS Continental Mark IV (US, UL TL 30)

The latest development in a series of high quality, light range safes, the SLS Continental Mark IV offers improved specification to protect moderate amounts of cash and valuables against attack by force, drills and explosives on the body, in addition to the protection against cigarette and alcohol in the door related areas. The inclusion of a zirconium alloy casting in the door, together with SLS patented 'Super-tite' glass greatly increases drill penetration into the vital locking areas. The SLS shroud provides superior protection against penetration for the handle.

Available in both sizes, the SLS Continental Mark IV provides complete functionality and is available in a range of finishes to suit your needs.

Safe Body - The main body of the safe using an aluminium alloy, a 3mm thick steel and the SLS World-Bestech lining for an internal diameter of 17" (430mm) and a 17" diameter steel surrounds the safe body.

Safe Door - The door is constructed from 1 1/2" (38mm) and 1/2" (13mm) steel formed to give an external thickness of 1 1/2" (38mm) enclosing a zirconium alloy casting with SLS 'Super-tite' to a thickness of 1" (25mm).



Unsuccessful: Torch and Tool Attack on the SLS Continental Mark IV (UL TL 30) Safe

FEATURES

Handle - Both the moving and fixed parts are of 1 1/4" (30mm) diameter steel locking into pressed steel cup welded to the inner body lining.

Locking - Locking can be effected by either an SLS 7-lever anti-drill keylock or a 5-wheel keyless combination lock. These locks are interchangeable, and dual locking can be supplied.

Re-Locking Devices - Live and dead relocking devices are fitted.

Floor Anchoring - Every safe is prepared with a base fixing hole for a 1/2" (12.5mm) diameter high tensile bolt suitable for use in concrete or wood floors.

Fittings - A full range of safe furniture, i.e. shelves, lockable full-width and half-width drawers and lockable cupboards, is available.

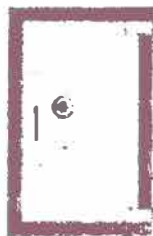
Independent Fire Test - A one-hour fire test was successfully achieved at Werrington Research Centre (Test Ref. W.R.C.S.I. No 22854/1).



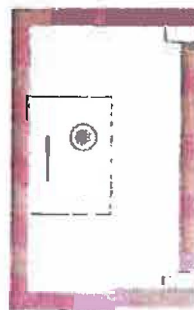
Model 1812



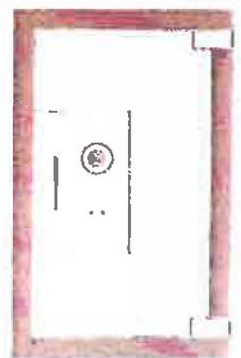
Model 2316



Model 3520



Model 5020
Model 5020I D



Mini Vault

		Model 1812	Model 2316	Model 3520	Model 5020	Model 5020I D	Mini Vault
EXTERNAL	INS	25 19 17	30 24 24	42 27 27	57 27 27 1/2	57 27 33	20 41 27 1/2
INTERNAL	INS	18 12 9	23 16 16	35 20 19	50 20 19	50 20 25 1/2	13 34 16
LBS		648	1145	1753	2487	2847	1720

All dimensions are to total depth over handle. SLS reserves the right to incorporate improvements and alter specifications accordingly without prior notice. All measurements are approximate.

MEGASAFE
HIGH SECURITY SAFES
(800) 345-6552 www.megasafe.com