

# TREASURY

## TRTL-30X6

### MEGASAFE HIGH SECURITY SAFES

Megasafe Industries, Inc. presents a line of TRTL-30X6 plus fire protection high security safes. This safe is designed to service and protect the needs of the jewelry, commercial and banking business. With Megasafe Industries you enjoy a track record of manufacturing, supplying, and servicing high security safes...since 1914.

#### DOOR

The TRTL-30X6 door has a total thickness of 7½". Constructed of outer and inner steel plates, electrically welded together and enclosing 5" composition of advanced torch and drill resisting barrier materials designed to withstand the most concentrated attacks.

#### BODY

The TRTL-30X6 total body thickness is 5" including a bell casted anti-torch and anti-drill advanced composition plus copper plates around the door jamb area. The outer and inner bodies are encased in continuously electrically welded steel plates and altogether provide a 5" superior barrier to prevent attacks by tool and torch.

#### BOLTWORK

The Treasury three-way boltwork mechanism is built to provide maximum security and protection to withstand attacks by tool and torch. The boltwork mechanism activates 1½" chrome-plated steel bolts. One of the bolts is a torch resistant copper bolt, which is installed randomly.

#### LOCKS

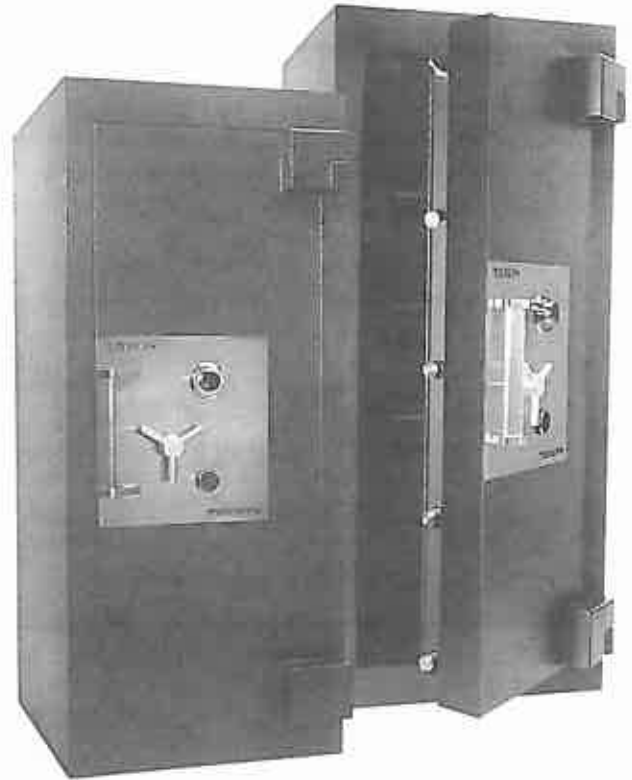
The boltwork mechanism is controlled by a U.L. Group I manipulation proof combination lock and by an additional high security anti-boroscope changeable keylock with a key that cannot be removed out of the safe door unless the door is closed and locked; this prevents the possibility of forgetting to lock the safe.

#### RELOCKERS

The boltwork mechanism is protected by relocking devices that are activated in case of tampering by means of drill, torch, heat or explosives.

#### INTERIOR FITTINGS

Adjustable shelves are standard. Lockers, and interior compartments are available as optional extras.



## DIMENSIONS AND WEIGHTS

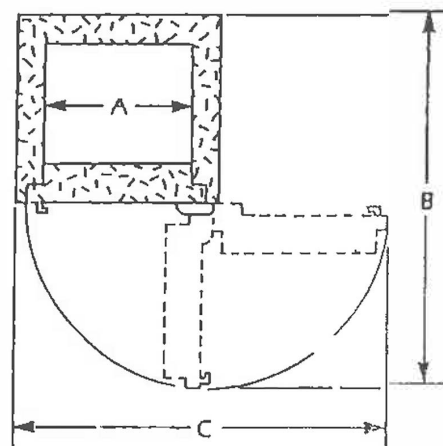
MODEL	Inside Dimensions			Outside Dimensions			Cubic	Weight lbs.
	Height	Width	Depth	Height	Width	Depth*		
2618	26"	18"	16.5"	36"	28"	29.25	4.5	2200
3620	36"	20"	18.5"	46"	30"	31.25	7.7	2950
4820	48"	20"	18.5"	58"	30"	31.25	10.30	3250
6020	60"	20"	20"	70"	30"	32.75	14.00	3980
6529	65"	29"	20"	75"	39"	32.75	22.00	4500
6534	65"	34"	26"	75"	44"	38.75	33.25	6700

\*Add 2 1/2" (65mm) to outside depth for handle

## DOOR SWING DIMENSIONS

MODEL	A	B	C
2618	18"	54.5"	51.5"
3620	20"	58.5"	55.5"
4820	20"	58.5"	55.5"
6020	20"	60"	55.5"
6529	29"	69.5"	73"
6534	34"	80.5"	83"

## DOOR SWING PROJECTIONS





# MEGASAFE

## HIGH SECURITY SAFES

(800) 345-6552      [www.megasafe.com](http://www.megasafe.com)