



SPARTAN 2000

S.P.C. A VOLTA GROUP COMPANY

Price Busting New Generation TL-30



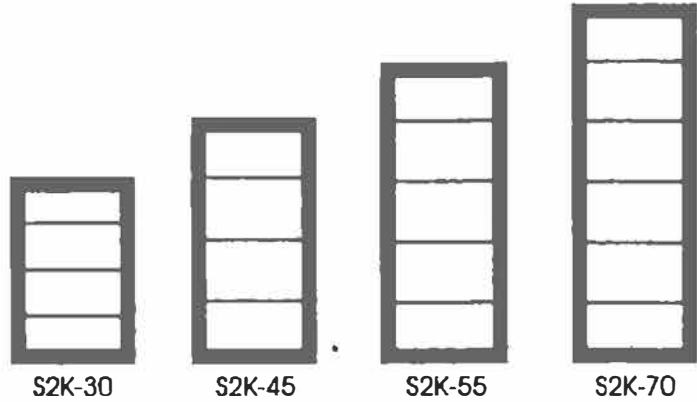
ISM™, *imitated* by many,
DUPLICATED by **NONE**.

All **ISM** Safes are Underwriters
Laboratories (UL®) approved.



**“WE DON'T JUST
MEET THE
STANDARDS,
WE CREATE THEM.”**

UL certified TL-30



| MODEL | INSIDE DIMENSIONS (INCHES) | | | OUTSIDE DIMENSIONS (INCHES) | | | CAPACITY CU FT | WEIGHT** LBS. | SHELVES QTY |
|--------|----------------------------|-------|-------|-----------------------------|-------|--------|-------------------|------------------|----------------|
| | HEIGHT | WIDTH | DEPTH | HEIGHT | WIDTH | DEPTH* | | | |
| S2K-30 | 30 | 21 | 20 | 36.5 | 27.5 | 28.5 | 7.3 | 1610 | 3 |
| S2K-45 | 45 | 21 | 20 | 51.5 | 27.5 | 28.5 | 11 | 2090 | 4 |
| S2K-55 | 55 | 21 | 20 | 61.5 | 27.5 | 28.5 | 13.4 | 2420 | 5 |
| S2K-70 | 70 | 27 | 20 | 76.5 | 33 | 28.5 | 21.9 | 3190 | 6 |

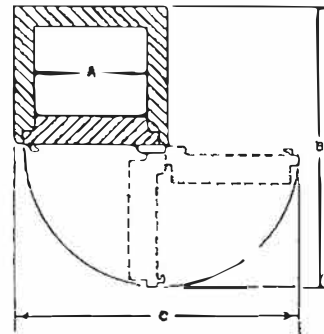
*Add 65mm to outside depth for handle and hinges

**Door weighs 19% of total

Features:

- Fire resistant to one hour
- Three-way boltwork with 8 nickel plated bolts
- CS-650 monolith door 5" total thickness
- Hard Plate protection in door
- 3.25" thick CS-650 monolith body
- One La Gard 6850 combination lock with drill resistant plate protection
- Live relocking device
- Three spoke bolt-opening and pull handle
- Adjustable shelves
- Alarm ready

DOOR SWING PROJECTIONS



DOOR SWING DIMENSIONS (INCHES)

| MODEL | A | B | C |
|--------|----|------|------|
| S2K-30 | 21 | 54 | 50.6 |
| S2K-45 | 21 | 54 | 50.6 |
| S2K-55 | 21 | 54 | 50.6 |
| S2K-70 | 21 | 61.3 | 58 |

In line with our policy to provide the best in security, ISM reserves the right to incorporate any improvements and alter any specifications without prior notice.

