



**TL-15 and TL-30 RATED  
BURGLARY SAFES**



## Tested and Classified by Underwriters' Laboratories, Inc.

We manufacture burglary resistive safes carrying the Underwriters' Laboratories, Inc. Class TL-15 and Class TL-30 labels.

We build our burglary resistive safes to exact engineering standards as established by Underwriters' Laboratories, Inc. utilizing the latest manufacturing techniques and equipment, including robotics.

### TL-15 Construction Features

**Door Thickness:** 1½" high strength steel

**Body Thickness:** 1 inch high strength steel.

**LOCKS:** U.L. listed Group 2 key changeable combination lock standard. See other locking options section.

**Relocking Devices:** Direct Drive — 3 relocking devices, one on each bolt. Indirect Drive — 2 relocking devices, one on boltwork & one on combination lock.

**Boltwork Options:** New economical Direct Drive boltwork or Indirect Drive boltwork.

**Hinges:** Equipped with heavy duty ball bearing hinges.

**Finish:** Standard slate gray finish. Custom colors available

**Corrosion Resistant:** Interior and exteriors painted.

**Optional Interiors:** Shelves, cash till lockers, manager lockers, slotted door depository lockers, coin racks and rotary hoppers.

**Cladding:** Offered concrete filled from the factory, or empty to be filled on-site.

### TL-30 Construction Features

**Door Thickness:** 1¾" laminated steel with an additional layer of hardened manganol plate.

**Body thickness:** 1 inch high strength steel.

**Locks:** U.L. listed Group 2 key changeable combination lock standard. See other locking options section.

**Relocking Devices:** Direct Drive — 3 relocking devices, one on each bolt. Indirect drive — 3 relocking devices, two on boltwork & one on combination lock.

**Boltwork Options:** New economical Direct Drive boltwork or Indirect Drive boltwork.

**Hinges:** Equipped with heavy duty ball bearing hinges.

**Finish:** Standard slate gray finish. Custom colors available.

**Corrosion Resistant:** Interior and exteriors painted.

**Optional Interiors:** Shelves, cash till lockers, manager lockers, slotted door depository lockers, coin racks and rotary hoppers.

**Cladding:** Offered concrete filled from the factory, or empty to be filled on-site.

**CUSTOM SIZES AND INTERIORS ARE AVAILABLE DETAILED PRICE QUOTES WILL BE PREPARED AT THE FACTORY.**

## Sizes and Options



**When protection of valuable items such as cash or jewelry is mandated, our large selection of U.L. Class TL-15 and Class TL-30 burglary resistive safes can solve your problem.**

### LOCKING OPTIONS

**Group 1 Anti-Manipulation Combination Lock** — This key-changeable lock affords a choice of at least one million possible combinations and is highly resistant to professional manipulation. It has been tested by U.L. and found to resist unauthorized opening by expert manipulation for a period of 20 man-hours.

**Group 1R Combination Lock** — This key changeable lock offers one million possible combinations and is highly resistant to expert manipulation, or attack by radiological photography. U.L. tests this lock in the same manner as the Group 1 lock with a further test of 20 man-hours of radiological attack.

**Silent Signal Alarm Combination Lock** — This lock automatically sends a silent signal to an alarm station when the first number of the combination is dialed 10 numbers higher than the set combination and the safe is opened. The safe will open on either the set combination or the alarm combination.

**Time Delay Combination Lock** — The combination may be dialed but the time movement in this combination lock prevents the lock bolt from being retracted and the safe opened until a preset delay period of 15, 20, 25, or 30

minutes has elapsed. Once the preset delay period has expired, there is a three minute period during which the bolt may be retracted and the safe opened.

**Key Changeable Key Lock** — This U.L. listed Group 2 key lock can be substituted for the combination lock. The lock can be easily changed to accept a different set of keys utilizing a change key. All keys are factory cut in pairs at random codes and cannot be duplicated with standard equipment.

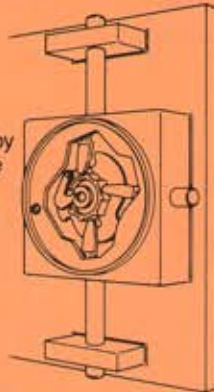
**Time Locks** — A time lock operates separately from the safe's combination or key lock. It blocks the movement of the safe's boltwork and will not allow the safe to be opened until the specified time period set on the time lock has expired. The time lock may be set for any period up to 144 hours. Time locks are available with two or three movements (clocks). The first movement to wind down to "0" will release the block in the boltwork. The safe can then be opened by operating the combination or key lock.

**Key Locking Dial** — A key lock secures the dial of the combination lock so it cannot be turned. This feature allows a form of dual control in safe opening procedures.

## BOLTWORK OPTIONS

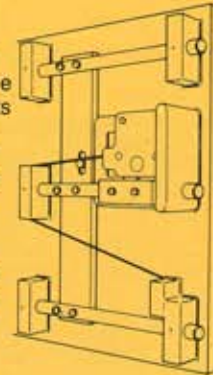
### Direct Drive

Provides 3-way boltwork, operated by the combination lock dial. No handle required. Locking mechanism is protected by 3 relocking devices which deadlock the boltwork if the lock is forced.



### Indirect Drive

TL-15 units are equipped with 2 or 3-3/4" hardened chrome bolts on the locking edge of the door. TL-30 units are equipped with 3 bolts. Optional top and bottom bolts are also available. Bolts are operated by the handle on the door. The locking mechanism is protected by drill resistant ball bearing loaded hard plate and three relocking devices to deadlock the boltwork if the lock is forced.



### U.L. Listed TL-15 Burglary Safes

Model No.	Model No.	Inside Dimensions/Inches			Outside Dimensions/Inches			Approx. Shipping Weight
		Height	Width	Depth	Height	Width	Depth	
JF-1013	J-1013	10	13	8 1/4	12	15	13 1/4	300 lbs.
JF-1213	J-1213	12	13	8 1/4	14	15	13 1/4	350 lbs.
JF-1414	J-1414	14	14	14	16	16	19	550 lbs.
JF-1616	J-1616	16	16	16	18	18	21	630 lbs.
JF-2020	J-2020	20	20	20	22	22	25	965 lbs.
JF-2420	J-2420	24	20	20	26	22	25	1020 lbs.
JF-2424	J-2424	24	24	20	26	26	25	1255 lbs.
JF-2424-4	J-2424-4	24	24	24	26	26	29	1275 lbs.
JF-3020	J-3020	30	20	20	32	22	25	1235 lbs.
JF-3024	J-3024	30	24	20	32	26	25	1350 lbs.
JF-3028	J-3028	30	28	20	32	30	25	1475 lbs.
JF-3030	J-3030	30	30	20	32	32	25	1550 lbs.
JF-3030-4	J-3030-4	30	30	24	32	32	29	1700 lbs.
JF-3434	J-3434	34	34	26	36	36	31	2050 lbs.
JF-3624	J-3624	36	24	20	38	26	25	1550 lbs.
JF-3636	J-3636	36	36	20	38	38	25	2100 lbs.
JF-4024	J-4024	40	24	20	42	26	25	1725 lbs.
JF-4034-6	J-4034-6	40	34	26	42	36	31	2375 lbs.
JF-4524	J-4524	45	24	20	47	26	25	1800 lbs.
JF-5024	J-5024	50	24	20	52	26	25	2000 lbs.
JF-5030	J-5030	50	30	20	52	32	25	2400 lbs.
JF-5034-6	J-5034-6	50	34	26	52	36	31	2750 lbs.
JF-6030	J-6030	60	30	20	62	32	25	2600 lbs.
JF-6034-6	J-6034-6	60	34	26	62	36	31	3150 lbs.
N/A	J-6634-6	66	34	26	68	36	31	3450 lbs.
N/A	7234-6	72	34	26	74	36	31	3750 lbs.
N/A	J-8234-6	82	34	26	84	36	31	4100 lbs.
N/A	*D1012-E1	7 1/4	10	13 1/4	9 3/4	12	17 1/2	260 lbs.
N/A	*310-E1	9	10	6 1/4	11	12 1/2	12 1/2	280 lbs.

### L.L. Listed TL-30 Burglary Safes

Model No.	Model No.	Inside Dimensions/Inches			Outside Dimensions/Inches			Approx. Shipping Weight
		Height	Width	Depth	Height	Width	Depth	
KF-1414	K-1414	14	14	14	16	16	19	550 lbs.
KF-1616	K-1616	16	16	16	18	18	21	630 lbs.
KF-2020	K-2020	20	20	20	22	22	25	965 lbs.
KF-2420	K-2420	24	20	20	26	22	25	1020 lbs.
KF-2424	K-2424	24	24	20	26	26	25	1255 lbs.
KF-2424-4	K-2424-4	24	24	24	26	26	29	1275 lbs.
KF-3020	K-3020	30	20	20	32	22	25	1235 lbs.
KF-3024	K-3024	30	24	20	32	26	25	1350 lbs.
KF-3028	K-3028	30	28	20	32	30	25	1475 lbs.
KF-3030	K-3030	30	30	20	32	32	25	1550 lbs.
KF-3030-4	K-3030-4	30	30	24	32	32	29	1700 lbs.
KF-3434	K-3434	34	34	26	36	36	31	2050 lbs.
KF-3624	K-3624	36	24	20	38	26	25	1550 lbs.
KF-3636	K-3636	36	36	20	38	38	25	2100 lbs.
KF-4024	K-4024	40	24	20	42	26	25	1725 lbs.
KF-4034-6	K-4034-6	40	34	26	42	36	31	2375 lbs.
KF-4524	K-4524	45	24	20	47	26	25	1800 lbs.
KF-5024	K-5024	50	24	20	52	26	25	2000 lbs.
KF-5030	K-5030	50	30	20	52	32	25	2400 lbs.
KF-5034-6	K-5034-6	50	34	26	52	36	31	2750 lbs.
KF-6030	K-6030	60	30	20	62	32	25	2600 lbs.
KF-6034-6	K-6034-6	60	34	26	62	36	31	3150 lbs.
N/A	K-6634-6	66	34	26	68	36	31	3450 lbs.
N/A	K-7234-6	72	34	26	74	36	31	3750 lbs.
N/A	K-8234-6	82	34	26	84	36	31	4100 lbs.

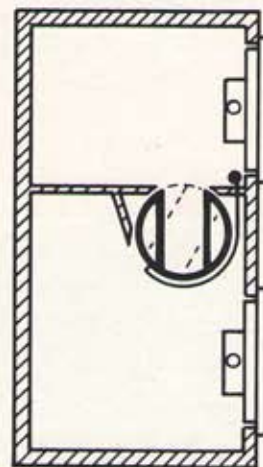
# U.L. Class TL-15 Depository Safes

Several different models of U.L. Class TL-15 Depository Safes are available in our standard line of burglary resistive safes. Each unit is composed of two safes, mounted on top of one another, with separate doors. The top door must be opened to make the deposit, with the bottom door only allowing access to the deposit. If desired, the doors can be mounted on opposite sides of the units. The depository between the two compartments can be either a rotary hopper or a direct drop slot equipped with a baffle plate. This type of unit is suitable for courier or armored car pick-up.

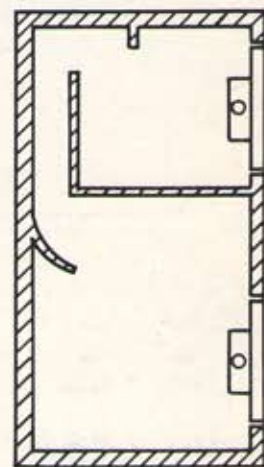
Model 800 is available without cladding. When extra security is required, a clad safe such as our Models 3030, 6060 or 9090 should be used. A clad safe has an additional outer steel wall with concrete poured between the inner and outer walls to provide an additional barrier and weight. A clad safe may be ordered concrete filled at the factory or empty to be filled at the installation site.



## 2 Depository Options



Rotary Hopper Depository  
Pull cable to rotate hopper



Direct Drop Depository  
With saw-tooth baffle plate

### U.L. Class TL-15 Depository Safe — Clad

MODEL	INSIDE			OUTSIDE			Overall Depth	Clear Door Opening	Cubic In. Capacity Depository	Approx. Shipping Weight
	High	Wide	Deep	High	Wide	Deep				
3030	T-10" B-16 $\frac{1}{4}$ "	10"	12"	36"	18 $\frac{1}{4}$ "	18 $\frac{1}{4}$ "	20"	9 x 9"	2160	660-U* 1200-F**
6060	T-12" B-18 $\frac{1}{4}$ "	16"	16"	42"	24 $\frac{1}{4}$ "	22 $\frac{1}{4}$ "	24"	9 x 9"	4864	875-U* 1975-F**
9090	T-13" B-30 $\frac{1}{2}$ "	16"	16"	56"	24 $\frac{1}{4}$ "	22 $\frac{1}{4}$ "	24"	12 x 13	8192	1025-U* 2580-F**

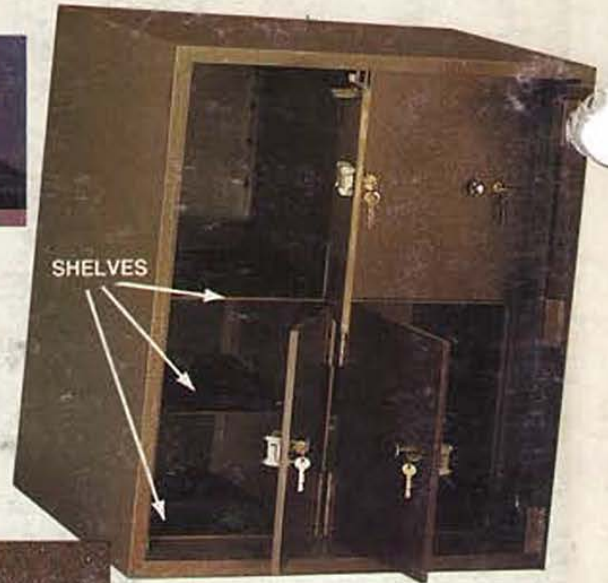
On 3030, hopper dimensions are: 3" wide x 8 $\frac{1}{2}$ " long x 5 $\frac{1}{2}$ " deep.  
 On 6060, hopper dimensions are: 3" wide x 12" long x 6 $\frac{1}{2}$ " deep.  
 On 9090, hopper dimensions are: 3" wide x 12" long x 6 $\frac{1}{2}$ " deep.  
 \*U = Unfilled; \*\* = Filled

### U.L. Class TL-15 Depository Safe — Without Cladding

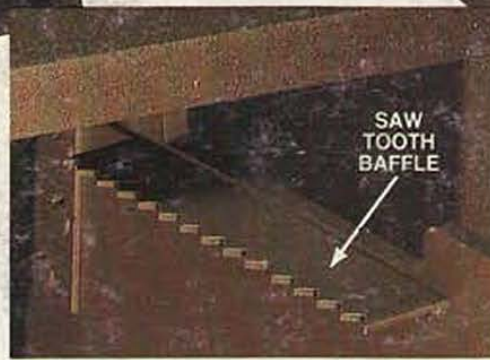
MODEL	INSIDE			OUTSIDE			Overall Depth	Clear Door Dia.	Cubic Inch Capacity	Approx. Shipping Weight
	High	Wide	Deep	High	Wide	Deep				
800 SDRH	T-9 $\frac{1}{2}$ " B-17"	10"	12"	29"	12"	14"	15 $\frac{1}{4}$ "	9 x 9"	T-1080 B-2400	525
800 SDDD	T-9 $\frac{1}{2}$ " B-17"	10"	12"	29"	12"	14"	15 $\frac{1}{4}$ "	9 x 9"	T-1080 B-2400	525

Hopper (3" wide x 8 $\frac{1}{2}$ " long x 6" deep) deposit opening returns to receiving position automatically.

# Special Options



KEY LOCKING COMPARTMENTS



## Single Compartment U.L. Class TL-15 in Floor Safe

MODEL	INSIDE INCHES			OUTSIDE INCHES			Approx. Shipping Weight	Recommended Cladding
	High	Wide	Deep	High	Wide	Deep		
490-E1	14	11½	9¾	18¾	14	12½	435	Flush
560-E1	15	12	12	17½	14½	14½	460	CH-1 CV-1
600-E1	18	12	12	20½	14½	14½	505	CH-1 CV-1
610-E1	18	12	12	23¼	14½	14½	510	Flush Top

## Double Compartment U.L. Class TL-15 in Floor Safe

MODEL	INSIDE INCHES			OUTSIDE INCHES			Approx. Shipping Weight	Recommended Cladding
	High	Wide	Deep	High	Wide	Deep		
480-E2	T 5½ B 8	11½	9¾	16	14	12½	445	CH-1 CV-1
490-E2	T 5½ B 8	11½	9¾	18¾	14	12½	450	Flush
560-E2	T 5½ B 9	12	12	17½	14½	14½	475	CH-1 CV-1
580-E2	T 5½ B 9	12	12	20¼	14½	14½	485	Flush Top
600-E2	T 8½ B 9	12	12	20½	14½	14½	520	CH-1 CV-1
610-E2	T 8½ B 9	12	12	23¼	14½	14½	525	Flush Top

NOTE: When installing horizontally, High dimension is depth and Deep dimension is the height. Specify for horizontal or vertical installation.

For the small business person or homeowner who wishes strong security for currency or other valuables, a U.L. Class TL-15 In-Floor safe is recommended. All models have nine inch square door openings for easy access. All models may be used as free standing safes, but may be clad and anchored for additional security.