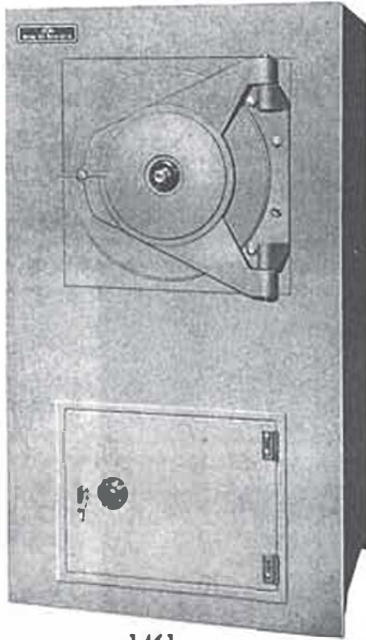


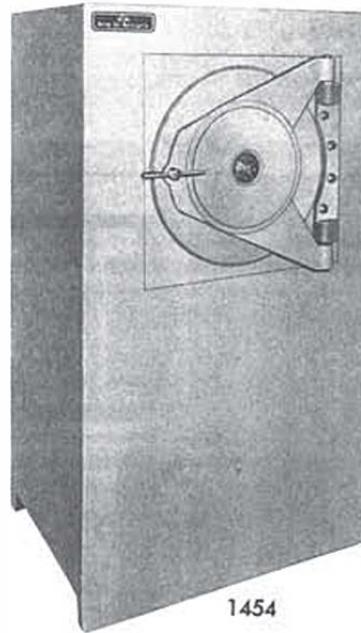
Special Purpose Money Safes

MERCANTILE SAFE CLASS "F" WITH STORAGE LOCKER

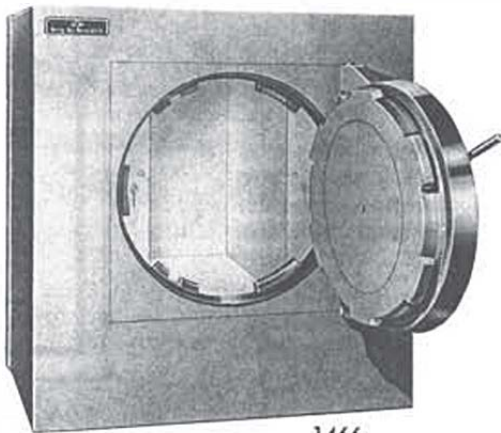


1461

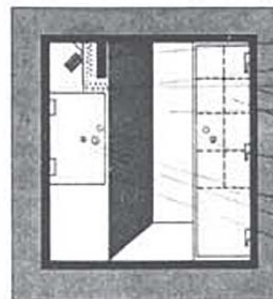
MERCANTILE SAFE CLASS "F"



1454



1466



- SLOT FOR DEPOSITS
- BAFFLE PLATES
- DEPOSIT COMPARTMENT
- COMPARTMENT FOR CASH REGISTER TRAYS
- ROLLED COIN COMPARTMENT
- DOOR TO ROLLED COIN COMPARTMENT
- LOCK TO ROLLED COIN COMPARTMENT
- SHELVING FOR ROLLED COINS
- LOCK FOR SIDING KEY
- LOCK FOR COLLECTION SERVICE KEY
- DOOR TO DEPOSIT COMPARTMENT

INTERIOR ARRANGEMENTS — 1454 & 1466

DIMENSIONS:

Left Side 30" H 6 3/4" W 12 1/2" D
 Middle 30" H 12 1/2" W 20 1/2" D
 Right Side — 8 pigeon holes 4 3/4" H, 3 1/2" W
 Money Slot — 5" H x 1" W Shelves 11" Deep

SUPER CASHGARD M SAFES — TL-30

MODEL NO.	OUTSIDE DIMENSIONS			CHEST INSIDE DIMENSIONS			LOCKER DIMENSIONS			Outer Door Opening	Shipping Weight
	High	Wide	Deep	High	Wide	Deep	High	Wide	Deep		
1461	66 1/2"	38 1/2"	29 3/4"	30"	28"	20 1/2"	22"	30"	24"	19 1/2"	4750
1454	66 1/2"	38 1/2"	29 3/4"							19 1/2"	4950
1466	40"	38"	29"							19 1/2"	3400

