

## **MASADA H-SERIES SAFES**



**HADAIKAN**



## **MASADA H-SERIES SAFES**

**(U.L. STD TRTL 30x6)**

**The safe you need  
when average standards  
are not enough.**

The expertise of Israel's most advanced R & D institutes is reflected in the Masada-H series. The result is a maximum security safe. The safe was submitted to the Underwriters Laboratories (U.L.) for testing, and passed the most severe TRTL 30x6 standard which means that the safe is highly protected on all six sides against drills, torches and other tools of the sophisticated burglar, bearing in mind the use of explosives. At the same time it preserves documents and valuables intact by heat.

The Masada-H series safes were designed light in weight and size to be installed easily in high-rise buildings.



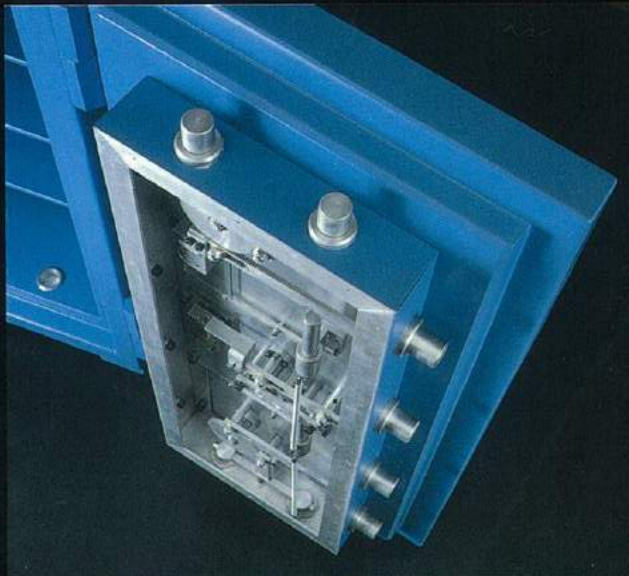
### **BODY**

Steel plates form the outer and inner sides of the safe's body.

Between the two layers of steel plate is a central layer of alloy composite, bell-cast as a single piece. This special alloy composite, called S.A., includes a ceramic component, and together with the safe's steel plating it presents extremely high resistance to flame, drilling, and all other means of mechanical penetration.

### **LOCKS & BOLTWORK**

The Masada-H series safe is equipped with maximum security U.L. group 1 manipulation-proof combination lock, and a second high security key lock is provided in conjunction with the combination lock. Twelve bolts of 1 9/16" (40mm) diameter secure the door on four sides. The boltwork and locking mechanism are specially designed to provide maximum protection against violent attack including explosives. It is impossible to withdraw the key without securing the bolts and locking the safe. So even when combination is not engaged the safe is still secure.



## HADAIKAN Metal Works Ltd.



### RELOCKING DEVICES

An attack on the safe automatically triggers relocking by means of random-located protective devices. The relocking devices protect the safe's vital mechanisms by blocking them mechanically, preventing the burglar from forcing the mechanisms and from opening the door.

### INTERIOR

The arrangement of shelves within the H- series safe is flexible, providing for adaptation to specific on-site needs.

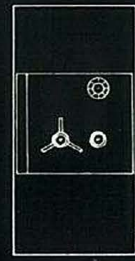
HADAIKAN is wholly owned by KOOR Industries Ltd, the nation's largest industrial complex, and is an integral part of its Mechanics & System Group.



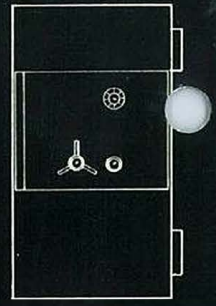
## TECHNICAL DATA



**H-1200**



**H-1500**



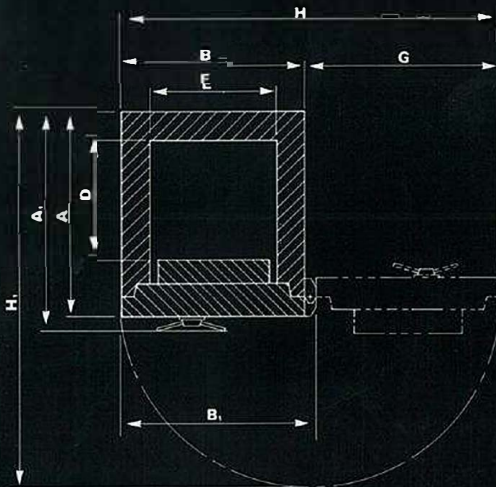
**H-1800**

## DIMENSIONS & WEIGHTS

MODEL	OUTSIDE DIMENSIONS			INSIDE DIMENSIONS			CAPACITY (CUBIC INCH)	DOOR WEIGHT	BODY WEIGHT	APPROX. TOTAL WEIGHT
	DEPTH	WIDTH	HEIGHT	DEPTH	WIDTH	HEIGHT				
H-1200	32" (.815m)	29" (.735m)	49" (1.245m)	18½" (.470m)	20" (.505m)	40" (1.015m)	14.800	825 lbs (375 kg)	2112 lbs (960 kg)	2937 lbs (1335 kg)
H-1500	32" (.815m)	29" (.735m)	59" (1.500m)	18½" (.470m)	20" (.505m)	50" (1.270m)	18.500	924 lbs (420 kg)	2277 lbs (1035 kg)	3201 lbs (1455 kg)
H-1800	34" (.865m)	38" (.965m)	69" (1.755m)	20½" (.520m)	29" (.735m)	60" (1.525m)	35.670	1397 lbs (635 kg)	3531 lbs (1605 kg)	4928 lbs (2240 kg)
H-2000	34" (.865m)	38" (.965m)	78 3/4" (2.000m)	20½" (.520m)	29" (.735m)	69 3/4" (1.770m)	41.460	1592 lbs (723 kg)	3997 lbs (1817kg)	5588 lbs (2540kg)

## DOOR SWING PROJECTIONS

## DOOR SWING DIMENSIONS



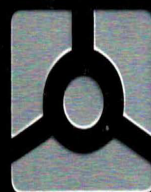
MODEL	A	A <sub>1</sub>	B	B <sub>1</sub>	D	E	G	H	H <sub>1</sub>
H-1200	32"	34½"	29"	31¼"	18½"	20"	31¼"	60½"	59"
H-1500	32"	34½"	29"	31¼"	18½"	20"	31¼"	60½"	59"
H-1800	34"	36½"	38"	40¼"	20½"	29"	40¼"	69¼"	78"

Hadaikan reserves the right to alter any specifications without prior notice.



**HADAIKAN  
METAL WORKS LTD.**

Industrial Zone B,  
Kfar Sava 44425, Israel  
Tel: (052) 23217  
Tlx: 341832 TROD IL



**MEGASAFE**  
HIGH SECURITY SAFES

(800) 345-6552

www.megasafe.com