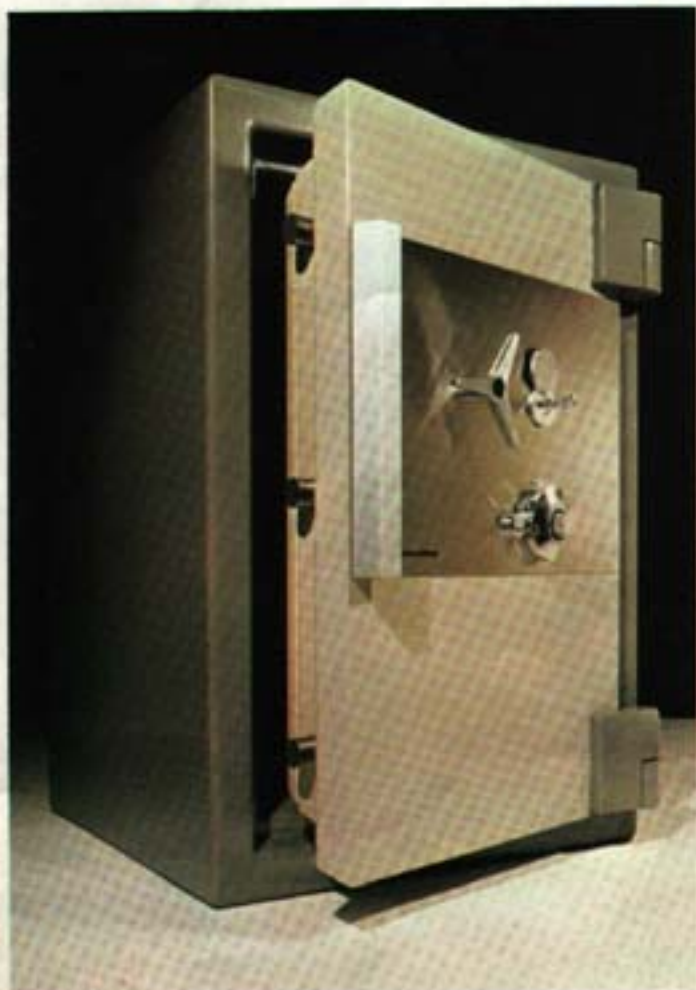
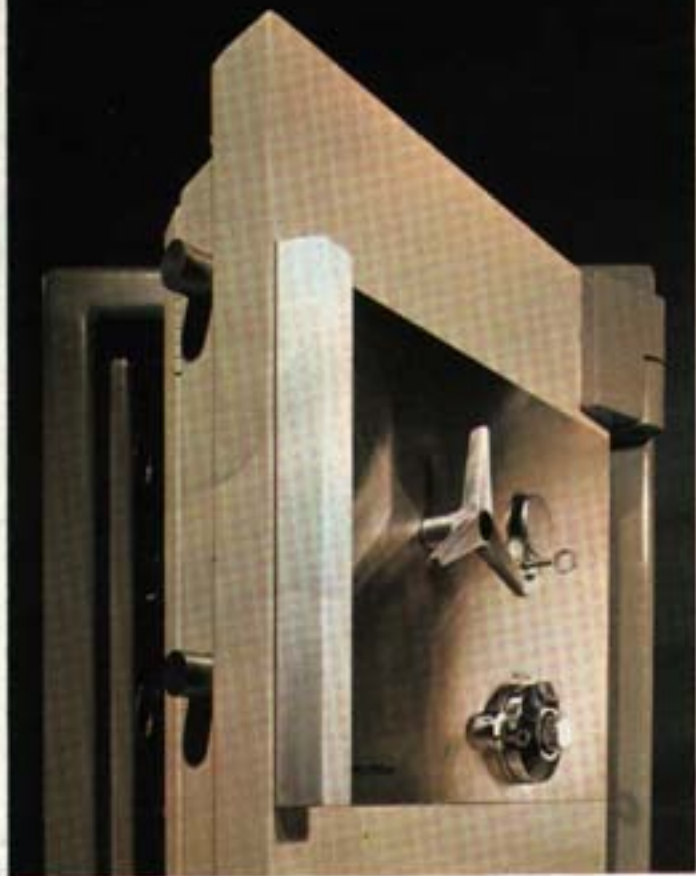


Chatwood Milner Money & Jewellery Safes



Oxyacetylene Explosive Drill resisting



Modern techniques versus modern criminals, that is the philosophy behind the Chatwood Milner Monarch Safe.

It is a safe which will resist all forms of attack for today's safebreaker is practised in up-to-the-minute metal cutting techniques, skilled in the use of explosives and an experienced operator with an armoury more extensive, lethal and scientific than ever before.

It is science that has given the safecracker these new opportunities and it is science that has given the safemaker the means to combat them.

The Chatwood Milner Monarch Safe is the product of exhaustive research into protective materials and techniques. The core of its protection is Chatwood Milner torch and drill resisting armour, a composite with a matrix of thermal strength and toughness incorporating inclusions to resist drilling.

Advanced manufacturing techniques have enabled Chatwood Milner engineers to produce a safe body in a single cast unit of consistent strength. Added to this is Chatwood Milner isolater boltwork, a revolutionary design of locking mechanism, which not only provides highly sophisticated drill protection but incorporates advanced techniques for protection against explosive attack.

Specification

Door 7/8 in thick and rectangular the door is constructed from outer and inner steel plates continuously welded to form a single structure and enclosing a 2 in thick solid layer of Chatwood Milner torch and drill resisting armour to produce a total metal thickness of 2 1/2 in. The total strength of this door is to effectively resist electric drills, oxyacetylene torches, forcing tools, sledgehammers and explosives. The boltwork chamber is protected over its whole area by torch and drill resisting armour, the whole making up a super burglar resistive door.

Body By enclosing a 2 in thick solid layer of torch and drill resisting armour which has been cast into one (1) piece in a steel outer and inner lining Chatwood Milner engineers have produced a safebody of exceptional strength. This 2 in thick solid layer of torch and drill resisting armour cast in one (1) piece eliminates the necessity of welding five (5) slabs of material together to form a body. Welded slabs produce weak welded seams. The Chatwood Milner one (1) piece cast construction has no weak welded seams. This one (1) piece construction eliminates the possibility of de-slabbng the entire top, sides, bottom or back of the safe as is possible with a safe manufactured with slab construction. This construction also eliminates the possibility of weak seams splitting open when explosives or wedges are used because Chatwood Milner construction

does not produce a slab constructed safe with weak welded seams. We would appreciate the chance to review this important feature with you.

Boltwork 1 1/2 in diameter steel sliding bolts extend from all four (4) sides of the door to ensure a solidarity with the body. The 2 in thick solid layer of torch and drill resisting armour protects the boltwork and locking mechanism from every angle. On closing the keyless combination lock or keylock the internal boltwork mechanism is disconnected from the external turn handle. The handle revolves free as though it were broken, without any possibility of re-engaging the internal boltwork mechanism until the proper combination numbers are used to open the combination lock and the proper key used to open the keylock. Any attempt to force an entry by dislodging the combination lock or keylock is thereby defeated since with the handle and boltwork system disconnected from one another there is no means of retracting the four (4) way boltwork system. Also by dislodging the combination lock and keylocking mechanisms or cutting the holding arms to the boltwork frames, the internal boltwork system relocks within itself not allowing the bolts to be withdrawn into an open position. Relocking devices are incorporated in the locking system to ensure that the bolt throwing mechanism remains positively locked in the extended position under various types of criminal attack. We would appreciate the chance to review this important feature with you.

Combination Lock with spy proof dial Four (4) movement spy proof dial combination lock is capable of 100,000,000 different combination changes. It is virtually pick proof. The spy proof dial design prevents unauthorised individuals from seeing the numbers dialled when you are operating the dial to unlock the combination lock.

Dial Check Lock You can keylock the dial in the combination lock in the open or closed position. This prevents the dial from being moved. During the day when the combination lock is in an open position the dial cannot be turned and thereby the safe accidentally locked. When you close the combination lock, upon leaving the premises, you can again lock the dial so that it cannot be turned by any unauthorised intruders who may try to manipulate the lock.

Change your own combination — whenever you wish Since security is the prime purpose of this safe, the combination is set by the individual responsible for the contents of the safe. No unauthorised person should know the combination numbers. We supply simple written instructions to you so that you can change your own combination at regular intervals.

Keylocking lock This lock is a double bitted keylock with ten (10) tumblers. This is a key retaining lock which means that the key cannot be withdrawn from the lock unless the bolts are thrown into a closed position and the key turned to a closed position. This ensures that the key cannot be removed from the lock unless the locking mechanisms are locked. This prevents you from accidentally removing the key from the keylock while the lock is in the open position and leaving the

premises. Ten (10) tumblers on a keylock is like having ten (10) numbers to open a combination lock. This lock is virtually pick proof.

Important When leaving the premises be certain that the combination lock and the keylock are locked. Do not assume that when either lock is locked that it is doing the same job as when both locks are locked.

Smoke Detection Due to the type of materials used in the construction of this safe a great deal of smoke is produced when heat is applied. This heavy smoke is disagreeable to the criminal and if the smoke detection alarm is in use, it should automatically operate.

Time Lock A 1, 2 or 3 movement 120 hour time lock can be incorporated in the locking mechanism. The time lock operates independently of any other locking mechanism in the safe. Preset to go off at a selected time the lock prevents the safe from being opened until the correct time is reached even if the other locking mechanisms have been unlocked. (Optional equipment).

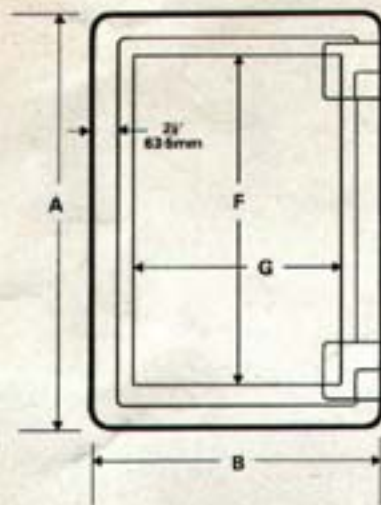
Cupboards Cupboards are constructed of sheet steel suitably reinforced and secured by a keylock with keys in duplicate. The internal height of the cupboard can be made to suit the client's exact requirements. The most common sizes are 12 in and 15 in high inside. The overall width of all cupboards is 1 in less than the internal width of the safe, the overall depth of all cupboards being 1 in less than the internal depth of the safe.

Fittings The fittings supports are formed in the sides of the lining, the fittings being designed so that they can be adjusted at 1/8 in intervals. The drawers are of steel secured by a keylock with keys in duplicate. The drawers are mounted between two shelves secured to the supports by vertical clips. They are supplied either as one full-width drawer or two drawers side by side. The shelves are of sheet steel flanged and secured to the support by clips.

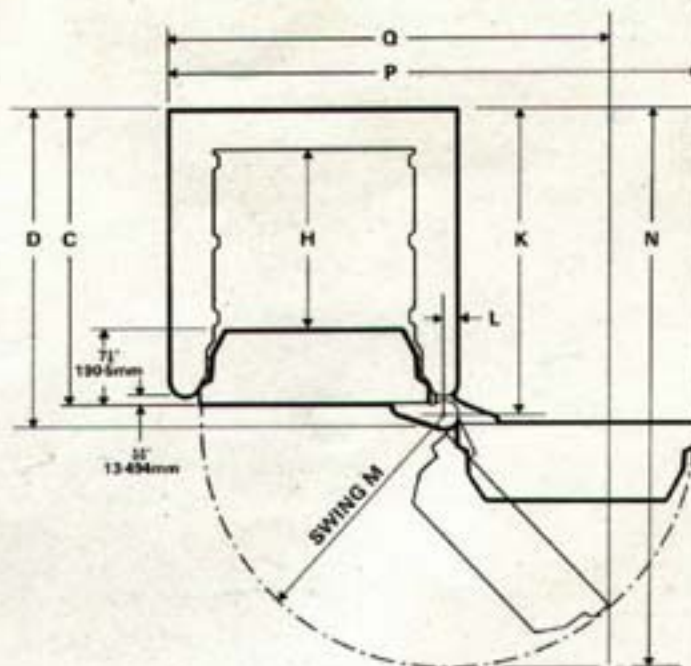
Size of Drawers

	inside size of drawer		
	high	wide	
		full width	half width
221515	4in	13 1/2 in	6 1/2 in
342019	4in	18 1/2 in	8 1/2 in
552019	4in	18 1/2 in	8 1/2 in
642817/21	6in		12 1/2 in
	fitment overall		
	deep	high	
221515	12 1/8 in	5 1/2 in	
342019	16 1/8 in	5 1/2 in	
552019	16 1/8 in	7 1/2 in	
642817	15 in	7 1/2 in	
642821	19 in	7 1/2 in	

FRONT ELEVATION



HORIZONTAL SECTION



Model	External dimensions				Internal dimensions		
	A/high	B/wide	C/deep over body	D/deep over hinge	F/high	G/wide	H/deep
221515	31in	24 1/2in	26 1/2in	28 1/2in	22in	15in	15in
342019	43in	29 1/2in	30 1/2in	32 1/2in	34in	20in	19in
462019	55in	29 1/2in	30 1/2in	32 1/2in	46in	20in	19in
552019	64in	29 1/2in	30 1/2in	32 1/2in	55in	20in	19in
642817	73in	37 1/2in	28 1/2in	30 1/2in	64in	28in	17in
642821	73in	37 1/2in	32 1/2in	34 1/2in	64in	28in	21in

Model	For swing			Overall/door open		
	K	L	M	N	P	Q
221515	27 1/2in	1 1/2in	20 1/2in	48 1/2in	44in	37in
342019	31 1/2in	1 1/2in	25 1/2in	57 1/2in	54in	45 1/2in
462019	31 1/2in	1 1/2in	25 1/2in	57 1/2in	54in	45 1/2in
552019	31 1/2in	1 1/2in	25 1/2in	57 1/2in	54in	45 1/2in
642817	29 1/2in	1 1/2in	33 1/2in	63 1/2in	70in	58 1/2in
642821	33 1/2in	1 1/2in	33 1/2in	67 1/2in	70in	58 1/2in

Model	Cubic capacity
221515	2.87 cu ft
342019	7.47 cu ft
462019	10.1 cu ft
552019	12.1 cu ft
642817	17.63 cu ft
642821	21.76 cu ft

Chatwood-Milner policy is one of constant improvement. We therefore reserve the right to alter any part of the specification outlined above without incurring any obligation.

Chatwood-Milner Limited
Asta House
55/56 Whitfield Street
London W1P 0AA