

ATLAS

TRTL-30X6



INSURANCE CERTIFICATION

In response to the requirements of the insurance industry, the Atlas jewelers safe was submitted to Underwriters Laboratories for approval. During extremely severe testing procedures, the safe demonstrated its ability to withstand virtually every tool and technique used by today's sophisticated burglars. Among the tools used were heavy duty torches, drills, jackhammers, and disc cutters. On January 8, 1986, the safe was awarded the TRTL-30X6 label.

In addition to the Underwriters Laboratories certification, Atlas has gone one step further by adding features not required by Underwriters Laboratories. Among them are extra relocking devices and fire protection.



SIZE	EXTERNAL			INTERNAL			CUBIC FEET CAPACITY
	HIGH	WIDE	DEEP	HIGH	WIDE	DEEP	
3520	50 ³ / ₁₆	31	33 ¹ / ₂	35 ³ / ₁₆	20	20	8.2
4720	62 ¹ / ₄	31	33 ¹ / ₂	47 ¹ / ₄	20	20	10.9
5920	74	31	33 ¹ / ₂	59	20	20	13.6
7027	80 ³ / ₁₆	37 ³ / ₁₆	33 ¹ / ₂	69 ¹ / ₄	26 ³ / ₁₆	20	21.4
7036	80 ³ / ₁₆	47 ³ / ₁₆	38 ³ / ₁₆	69 ¹ / ₄	36 ³ / ₁₆	25 ¹ / ₄	36.8

THE AFFORDABLE HIGH S



Atlas Safe Company, with the approval of Underwriters Laboratories, is proud to introduce a new generation of jewelry store quality safes. At last, there is an affordable TRTL-30X6 that combines strength with beauty.

SMOKE EMITTING MATERIAL:

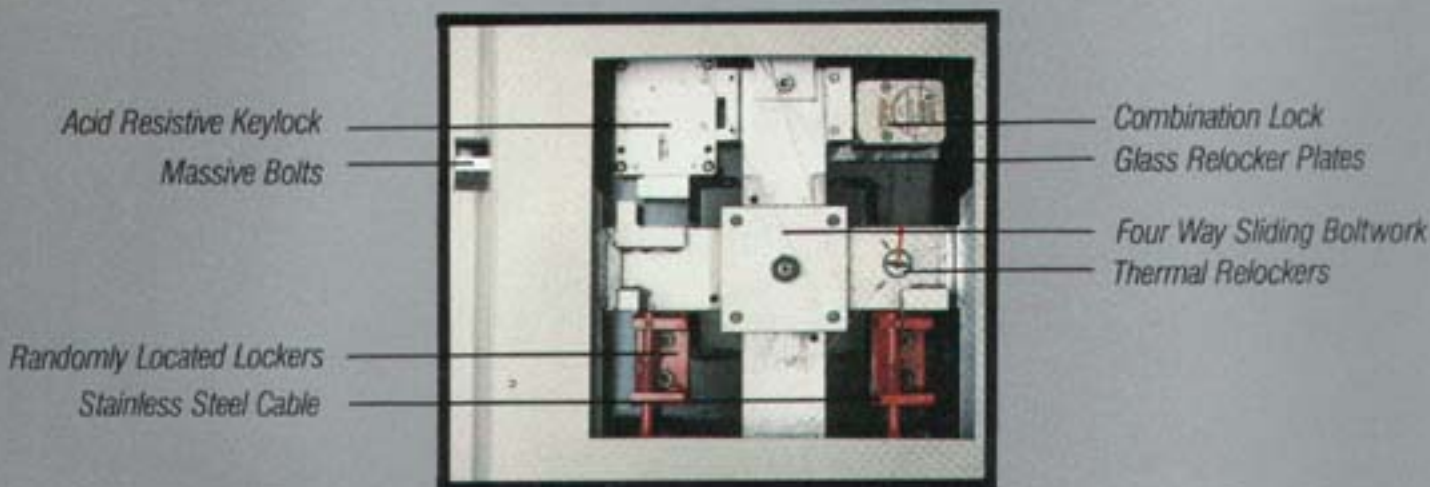
Incorporated in the six sided protection is a material called koalite. When attacked by a torch, this material will trigger the emission of an enormous amount of smoke and fumes creating an extremely hazardous environment. In addition to discouraging the attacker it can also set off smoke alarms and possibly be visible from the street.



TORCH AND DRILL PROTECTION:

The Atlas TRTL-30X6 door and body feature a revolutionary new torch resistant material known as Alusey. Used in conjunction with copper it has time and again demonstrated its ability to withstand torch attack. In independent testing and at Underwriters Laboratories it has been established that the addition of aluminum oxide nuggets in a monolith of super thermosy makes the safe extremely drill resistive.

SECURITY JEWELERS SAFE



ACID RESISTIVE KEYLOCK:

Independent of the combination lock is the Swedish convair keylock. This double bitted, nine lever high security lock is pick and acid resistant and easily changeable. As a further check for security, the key is only removable in the locked position, thereby assuring that the safe is locked when the key is removed.

MASSIVE BOLTS:

This massive boltwork system is designed to offer maximum protection against physical attack.

RANDOMLY LOCATED RELOCKERS:

For additional security locations of the relocker bolts are randomly positioned during production.

STAINLESS STEEL CABLE:

The use of aircraft grade stainless steel cables connecting the glass plates to the relocking system assures reliability.

COMBINATION LOCK:

This Underwriters Laboratories approved group one lock is manipulation proof with one million possible combinations. It is manufactured by Sargent and Greenleaf in Nicholasville, Kentucky.

GLASS RELOCKER PLATES:

Located between the door and the locking mechanism, this glass plate is designed to shatter during torch or tool attacks thereby activating the relocking system.

FOUR-WAY SLIDING BOLTWORK:

The massive four-way boltwork mechanism being used is designed to offer maximum protection against torching, drilling, and explosives.

THERMAL RELOCKERS:

In the event of a torch attack, this device is designed to activate the relocking system.